

DRAWING NUMBER
28-130

PLAT OF FLORAL PARK

IN S 1/2 OF SEC. 5, TWP. 45 S., RGE. 43 E.

PALM BEACH COUNTY, FLORIDA

FEBRUARY, 1951 SHEET 2 OF 2 SHEETS SCALE: 1"=100'

PREPARED IN THE OFFICE OF GEORGE S. BROCKWAY,
REGISTERED ENGINEER & SURVEYOR, WEST PALM BEACH, FLA.

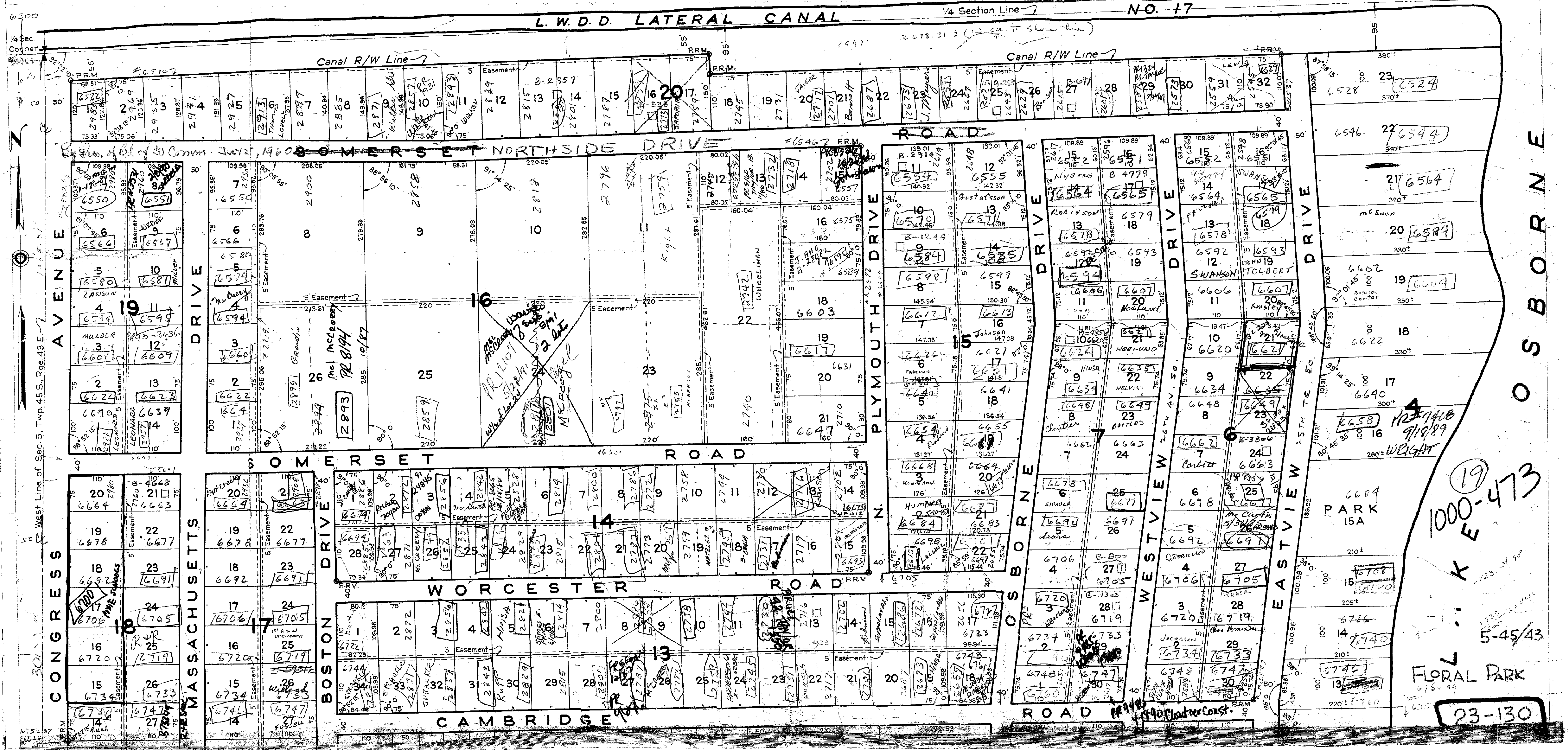
130

STATE OF FLORIDA
COUNTY OF PALM BEACH, SS.
This Plat was filed for record at 2:50
this 2 day of March
1951, and duly recorded in Plat Book No.
23 on page 130.
J. ALEX ARNETTE, Clerk Circuit Court
By Walter B. Reese, D. C.

DRAWING NUMBER

DRAWING NUMBER

DRAWING NUMBER



1000-473
K E

5-45/43

FLORAL PARK

23-130